
ROSE CLIPPINGS

Newsletter of the Rose Society of Green Valley

www.gvrose.org

September 2008

From the President's Desk

Karen Packer, President

Don't let this happen to Green Valley

In June I received a letter from the Yavapai Rose Society that as of May 31, 2008 the organization was dissolved. Located in Prescott, the YRS was founded in 1982. Lack of new members and lack of people to volunteer to serve as officers led to the end.

It will take our combined effort to keep RSGV strong and viable.

So I ask all members of Green Valley to work extra hard to find new members (If a neighbor has roses in the yard ask them to a meeting).

And when new officers and leaders are needed please be willing to step up.

It will take our combined effort to keep RSGV strong and viable.

continued on page 2

From the Garden

Dave Palmer, Garden Director

Soon the weather will begin cooling off. It is the time that roses will flourish once again. It is recommended that you fertilize with something similar to 20-20-20. It is important that the 2nd number is higher as it gives the blooms a boost for the fall growing season. Continue with fish emulsion and Epsom salts. Watering is still important as the weather is still hot. You should see an increase in the number and size of your blooms.

East Center Garden

On a side note, those who have signed up to dead head the roses in the East Center garden are reminded that they are badly in need of being dead headed at this time. Also don't forget about pulling any weeds that are present. It is okay to do some light pruning on the canes as you find them. We are trying to prepare the garden for our fall rose show which is the first week of November. Lets all pitch in and make our garden the best show in town. ❖

Mystery Member Revealed!

The May Mystery Member was Donaldina Joung. Did you realize that we have such an experienced and talented rosarian in our midst? Stay tuned in the coming months for other Mystery Members.....an opportunity to learn more about fellow RSGV members!

*"Would you appoint some other flower to reign
In matchless beauty on the plain
The Rose (mankind will all agree)
The Rose the Queen of Flowers should be?"*

Sappho, 650BC

INSIDE THIS ISSUE

- 1 From the President's Desk
- 1 From the Garden
- 2 Notes From All Over
- 3 Upcoming Events
- 4 Rose Show News
- 5 ARS Consulting Rosarian School

GVR

The problems with GVR are at last solved and all our dates for 2009 are confirmed. I have learned that RSGV was the first target but by no means the only one. Even HOA's were affected.

American Rose Society

They are offering a new plan for new member recruiting efforts.

New members will receive:

1. A 4 month trial membership Free, 2 issues of American Rose magazine and a membership card (gives discounts).
2. All American Rose Selections 2009 Winners Brochure.
3. 2007-2008 ARS Handbooks.

Names must be given to Karen Packer to be forwarded to ARS. Cut off dates are Sept. 24th and Nov. 12th.

Fund Raising Ideas

Please let LeaEllen or a Board member know if you have an idea to help earn some extra money for RSGV. This is IMPORTANT. Thank you.

DUES CHANGE

At the April 2008 Board meeting a motion was made and carried (after discussion) to raise the dues beginning January 2009. The single fee will be \$17.00 and the couples fee is \$20.00. This is more in line with other organizations.

Garden Tea

At the September Board meeting (Sept. 13th) we will discuss the future of the Tea. Please contact any Board member to share any thoughts you may have.

Board Positions

We still need a 1st Vice President. Call Karen to volunteer.

Committee Chairmen

We need a Publicity Chairman and a Bouquet Chairman.

These jobs are not difficult just require a little time. Please volunteer.

Consulting Rosarian School

Sponsored by the West Valley Rose Society will be held Sat. September 20th. See page 5 or see Karen or call Heidi Leavitt 602-971-0179. Deadline is Sept. 13th. Cost is \$22.00. I have the sign-up forms and menu selections. (In Phoenix)

Arrangements Judges School

Sponsored by Mesa-East Valley Rose Society will be held Nov 22-23, 2008. For more info contact Karen or Marylou Coffman (480-926-3064) or Helen Baird (602-257-0077) or email to Coffmanml@ao9l.com. ❖

Notes From All Over

By Merle Kelly

Enjoy your summer. We are in MN, so enjoying the summer here. I miss having to take care of a garden, but try to help my daughter in hers when I can and if it does rain. Sure makes weeding go faster if ground is wet. But we do know this in AZ. I may be on the mailing list for the newsletter and you can put me on the list to receive it by e-mail. We will return to AZ the last week of August and a few days into Sept. We have to see our roses and mesquite beans. Then back to MN for the fall school activities of grandchildren. Three will be seniors this year so a busy time with all their activities. We will return to GV for good about the third week of October.....See you then. ❖

Edna Returns!

Edna Carella, former RSGV newsletter editor, is back in Green Valley. Edna moved to California for a while but has decided that desert living suits her. She has agreed to serve as RSGV secretary for the 2008-09 year. Welcome back Edna!

MEETING INFORMATION

Monthly meetings are held the first Monday of the month (see Upcoming Events for exceptions) at 7:00 pm (6:30 coffee social) in the East Social Center, 7 South Abrego Drive, Green Valley, Arizona.

Directions: From I-19 South, take Exit 65 East one block to Abrego Drive.

No meetings June, July or August.

Dues are \$17 single/\$20 family per year payable in January.

Mail to RSGV, PO Box 309, Green Valley AZ 85622

Board of Directors meetings are held the second Saturday of each month at 10:00 am at the East Social Center.

Rose Society members are welcome to attend the board meetings.

UPCOMING EVENTS

RSGV MONTHLY MEMBERSHIP MEETING

TIME: September 8, 2008 7:00PM, coffee at 6:30PM
Donaldina Joung - "Preparing our roses for exhibition"

RSGV BOARD MEETING

TIME: September 13, 2008 10:00 AM
Rose Society members are welcome to attend

CONSULTING ROSARIAN SCHOOL

PLACE: Stuffington Bear Factory, Phoenix AZ
TIME: September 20, 2008 9:30AM
See page 5 for details

ROSE SHOW: "ROSES ON THE MENU"

PLACE: East Social Center
TIME: November 2, 2008

ARRANGEMENTS JUDGES SCHOOL

PLACE: Phoenix
TIME: November 22-23, 2008
Contact Marylou Coffman coffmanml@aol.com
See page 2 for details or see Karen Packer

Rose Society of Green Valley

Officers

President: Karen Packer

Packerj2000@yahoo.com 777-5624

1st Vice President of Programs: OPEN

2nd Vice President of Fund Raising: Dan Barta

Treasurer: Jeannie McGaughey

Gene_jean_mcgaughey@msn.com 648-6363

Secretary: Edna Carella

Board Members

Membership: Marcia Berggren

Meek4@cox.net 648-5118

Rose Show: Marianna Steele

steelpiano@aol.com 399-1180

Garden Director: Dave Palmer

davidh45@msn.com 625-5234

Past President: Sarah Hogan-McNutt

rosesintubac@hotmail.com 398-1851

Committee Chairman

Hospitality Co-Chairs: Patty Green and Regina Tarr

Newsletter: Sue Rock

phlr@iname.com 977-3076

Publicity: Open

Web Master: Bob Dahms

bdahms@mac.com 762-1692

Consulting Rosarians

Les and Susanne Hayt, 625-0858

Donaldina Joung, 398-3239

What to do in September

In the fall, it is time to start thinking about doing some light pruning or grooming on your roses. In mid-September, remove the top 1/3 of your roses. Basically this is the twiggy, thin stuff that has grown over the summer. Remove any dead canes and clean up all the dead or fallen leaves and debris. Do **not** remove all the leaves from the canes like you do when you prune in January.

Partially shade any roses that are left with virtually no leaves on them to avoid getting sunburn on your canes. You can use shade cloth or some other device that allows a lot of air circulation and early morning or late sunlight. Remove, once new growth is 4 to 5 inches. Put potted roses in a shaded area until growth has started.

Keep up your deep watering schedule especially if it stays hot. Roses in pots will probably still need daily watering.

Bring your roses on slowly if the weather continues to be hot. Only apply organic fertilizer and/or time-release fertilizer. Apply full strength liquid fertilizer with it starts to cool down at least at night. Don't try to jump-start your roses by giving them a big boost of fertilizer when it is still over 90 degrees. With few leaves left after pruning and the low sun, you risk burning up your canes. Don't forget to water your roses well before fertilizing.

Apply Epsom salts to your roses. Recommended dosage is 1/4 cup per hybrid tea, grandiflora or floribunda rose. 2 Tbsp. per miniature rose.

Unless you have a bad case of bugs or mildew, don't start weekly spraying for pests and mildew until early October. Spider mites are still a possibility, so continue to blast your roses with your water wand two or three times a week. ❖

Rose Show News

By Marianna Steele, Chair

Plans for the rose show are moving right along. We need everyone's help.

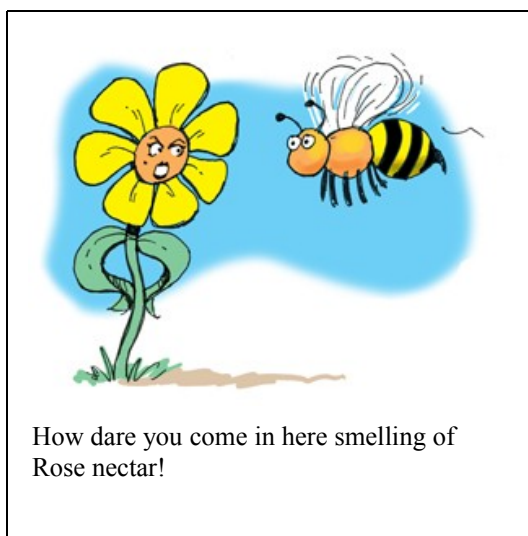
Don't miss the first meeting in September. Our speaker will share the tricks to preparing your roses for the show.

Everyone will be asked to sign up for the jobs they prefer to do. If you miss the meeting then call me (399-1180) or email me at Steelepiano@aol.com so I can write down your area of work.

Karen Packer would appreciate help with transporting 17 – six-foot tables. If you have a pickup truck or other larger vehicle please give her a call.

We must have everything cleaned up and be out of the building by Sunday Nov. 2 at 9:00. We will need everyone to help with these jobs. Setting up will begin on Saturday, Nov. 1 at noon. Please use the front door.

Much has already been done which is truly wonderful. Special thanks to everyone who has been hard at work already.



ARS Consulting Rosarian School

For those of you who might like to attend the ARS Consulting Rosarian School next month, Bob Martin will be presenting, back from California by popular demand. It is Saturday, September 20th, hosted by AZ West Valley Rose Society at Stuffington Bear Factory, 2302 East Thomas Rd., Phoenix. The schedule is as follows:

Registration - 9:30 to 10:00 am, with Continental Breakfast and Social

Presentations - 10:00 am to 4:00 pm

Lunch break - Noon to 1:00 pm

Testing - 4:00 pm

The cost is \$22.00 which includes Continental Breakfast and Paradise Bakery & Cafe boxed lunch. Beverages will be available.

Contact Heidi Leavitt at (602) 971-0179 or email her at htroses3@cox.net. The deadline is September 13.

Please make all checks payable to WVRS (West Valley Rose Society) for \$22.00 and mail to: Heidi Leavitt, 13219 N 19th Way, Phoenix, AZ 85022

Name _____

Address _____

Phone and email

ARS Home Society

I will be sitting for the test _____

I will be attending the school only _____

Sandwich or Salad choice
is: _____

BAKERY FRESH SANDWICHES & SALADS

Choose a sandwich or a salad below, only one, not both

Mayonnaise, Grey Poupon and specialty sauces served on the side (Varieties may vary per store location)

Sandwiches

Chicken Walnut: Paradise Chicken Walnut Salad with lettuce and tomato

Traditional Turkey: Roasted turkey with lettuce and tomato

Turkey Cranberry: Roasted turkey with cranberry sauce, lettuce and tomato

Paradise Club: Ham, turkey and bacon served on a butter croissant with marinade, lettuce and tomato

California Turkey Sandwich: Sliced roast turkey, smoke house bacon, cucumber, lettuce, tomato w/our pesto mayo and creamy ranch spread

Ham & Swiss: Honey cured ham with Swiss cheese, lettuce and tomato

Albacore Tuna: Chunky tuna salad with lettuce and tomato

Vegetarian Sandwich: Havarti cheese, roasted red bell peppers, cucumber, lettuce, tomato and our Paradise pesto mayo

Paradise Roast Beef: Thinly sliced medium roast beef, lettuce, tomato and a zesty horseradish sauce

Curry Chicken Salad Sandwich: Mild curry chicken salad, Craisins, sunflower seeds, Granny Smith apples, lettuce, tomato, mayo

Salads

Southwest Caesar: Romaine lettuce tossed with pepper Jack cheese and tortilla strips. Chipotle Caesar dressing on the side.

Roasted Chicken Caesar: Roasted chicken breast on top of Romaine lettuce tossed with garlic croutons and Parmesan cheese. Caesar dressing on the side.

Chicken Walnut or Albacore Tuna Caesar: Chicken Walnut Salad or Albacore Tuna Salad on top of Romaine lettuce tossed with garlic croutons and Parmesan cheese. Caesar dressing on the side.

Southwest Chicken Caesar: Roasted chicken breast on top of Romaine lettuce tossed with Cheddar Jack cheese and tortilla strips. Chipotle Caesar dressing on the side.

BBQ Chopped Chicken: Romaine lettuce tossed with corn, jicama and black beans topped with diced BBQ chicken, diced tomatoes and pepper Jack cheese. Ranch dressing on the side. ❖

FOR SALE

AVAILABLE AT EVERY MEMBERSHIP MEETING

RSGV APRONS - \$12

VESTS - \$12

PATCHES - \$5

BOOKS - "A COMPREHENSIVE GUIDE TO GROWING EYE POPPING ROSES IN TUCSON'S DIFFICULT SOIL AND WEATHER CONDITIONS by the Rose Society of Tucson - \$8

MAY MEETING HIGHLIGHTS

Installation of the new officers for 2008-2009 took place. The program for May was a Desert Pot Luck. Everyone brought their favorite dessert to share.

RSGV
PO Box 309
Green Valley AZ 85622

ADDRESS CORRECTION REQUESTED

Newsletter Information

By Sue Rock

Please send a monthly report if you are an officer or a committee chairman.

Send interesting information to share if you are a member.

The deadline to get the news to the editor is the 15th of the month. Email to Sue Rock at

philr@iname.com.

Please send a monthly report if you are an officer or a committee chairman.

Contribute interesting information to share if you are a member.

Publication is 10 days before the membership meeting. The newsletter is published monthly September through May. ❖

